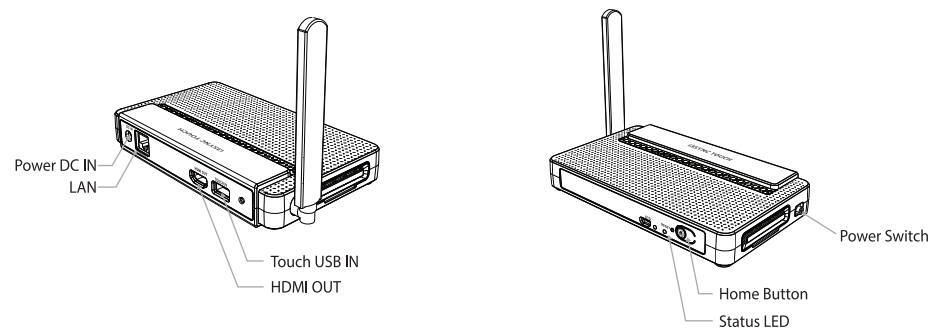
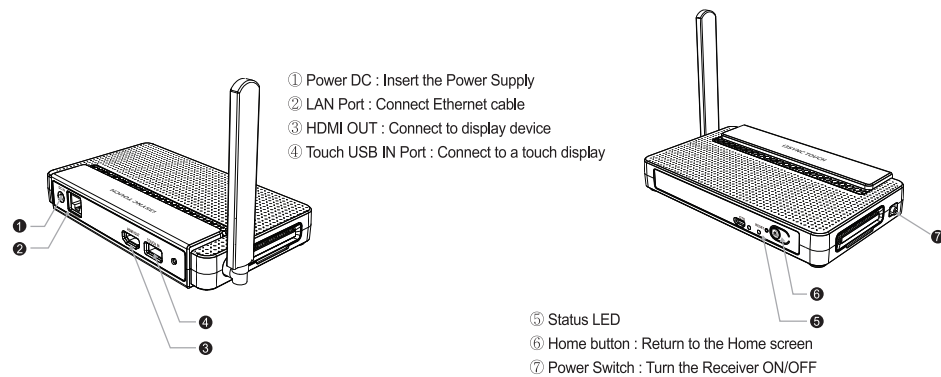


Product Appearance

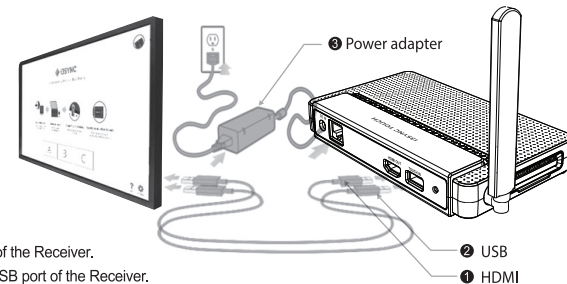


Features of i3SYNC Touch Receiver



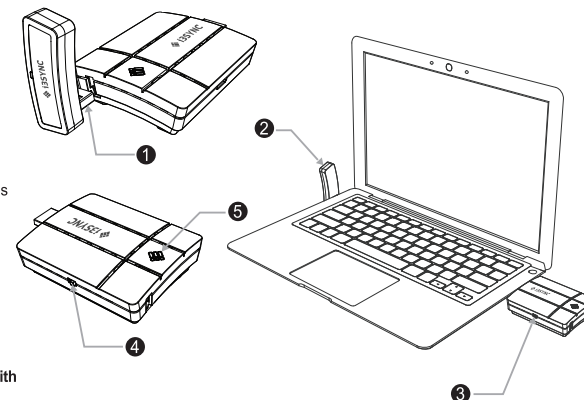
Installation

Step 1. Install Receiver



- ① Connect an HDMI cable from a display to the HDMI IN port of the Receiver.
- ② Connect a USB cable from a touch device to the Touch IN USB port of the Receiver.
- ③ Connect the Power Supply that is included, in the Power In port of the Receiver.

Step 2. Install Transmitter

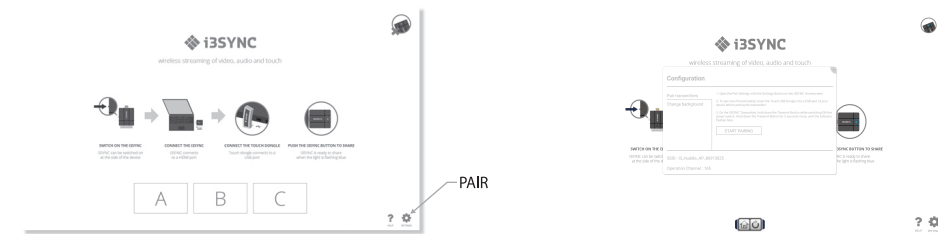


- ① Remove the Touch USB Dongle from the Transmitter.
 - ② Insert the Dongle into the USB In port of your laptop or PC.
 - ③ Connect the Transmitter to the HDMI out port of laptop or PC. Use the HDMI extension cable provided if needed.
 - ④ Slide the power switch to the left to turn power ON and the Status LED will be lit in blue.
 - ⑤ Press the Transmit button and an image will appear on the display device of which the Receiver is installed.
- If multiple Transmitters are connected, the corresponding screen of the Transmitter that has just been clicked will appear, as part of the product's integrated switching function.

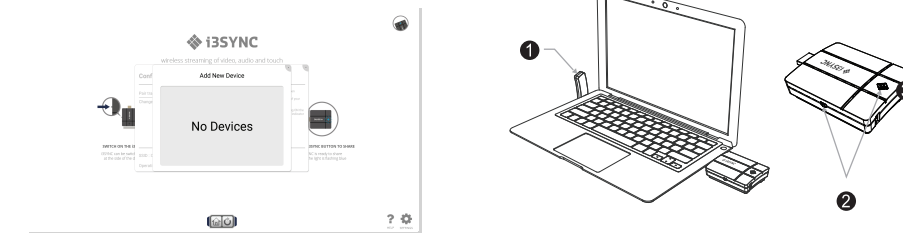
For first use : Please find the instructions to pair transmitter with receiver in the User Manual of the Receiver, or on www.i3-learning.com

Pairing Receiver and Transmitters

1. First time pairing



Pair the transmitter with the Receiver by entering pairing mode in the Settings



- ① Connect the Touch USB dongle to the USB port of laptop or PC.
- ② Press and hold the Transmit Button, while switching the power switch to ON. Keep holding the Transmit Button for 10 more seconds.
- ③ Wait until the status LED starts flashing blue..